

Regency Block Instructions

© 2012 Catherine

Instructions for Straw

MATERIALS

- Straw braid 4 mm width x 3 m length, Matching thread,
- Berry pins, Sewing needle.
- Hat bonnet block

MAKING THE BRIM & CROWN

To aid in positioning, a fine double sided tape is run in four strips over the crown and brim forming a cross – this will help hold the braid in place while we work on the bonnet. Start by finding the cord at the edge of the braid and draw the cord up creating a slight gather, turn the braid into a spiral, tucking the end under neatly on the wrong side; secure and slip stitch the edge of the braid starting at the centre and working around the edge. Place the hat on the block crown, and spiral two more rows of braid;

The double sided tape will hold the braid in place. Slide two pins through the braid in different directions – this will hold the braid together when you lift the hat from the block and stitch or you may prefer to stitch while it is on the block. Stitch around the new braid rounds; repeat this step until you have reached the edge of the crown top. Continuing down the crown and brim making rounds of braid to form the crown and brim, stretching the braid as it crosses the narrow back bonnet brim by pulling a small section between your finger to narrow it before stitching.

Complete the brim. Cut the braid leaving a 4 cm tail; overlap this tail gradually on to the already stitched braid. Neatly stitch down. For detail add a looped edge to the bonnet by gathering braid and crossing over of loop braid and stitch where it meets the main brim. Remove gently from block and double sided tape. Decorate with ribbon tie and spray of flowers.

Cat & Co

31 Hurt Pde Unanderra 2526 N.S.W Ph/ 02 42713302

email artist@catnco.com www.catnco.com



Instructions for Felt Hat

Worked over Millinery Bonnet Block

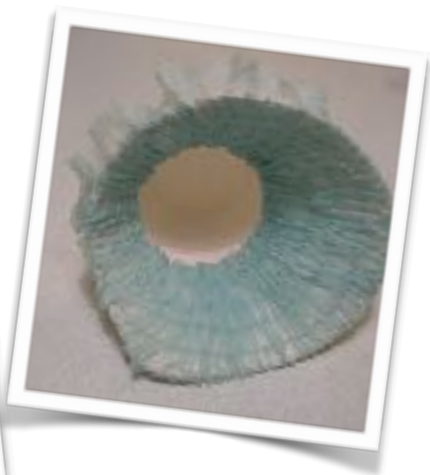
© 2012 Catherine Mather

MATERIALS

- Wool Felt 20 cm x 20 cm
- White glue, elastic bands
- Hat block

Mix 6 teaspoons of water with 1t to cover felt with a pressing cloth, remove and cut the excess brim turning s away . teaspoon of white glue. This mixture will be used to stiffen the 30 cm x 30 cm wool felt square, work the mixture in to the felt and leave to dry on a flat plastic or glass surface over night. To protect block when working with stiffen felt cover block with cling film. Dampen the felt with a spray of water, cover the bonnet block with cling wrap, centre the felt over the crown of the block, secure with elastic bands and pins pushed through the holes provide in the bonnet block. Pull down on each of the 4 corners of the square until it sits neatly around the block without any folds, if needed a shot of steam from the iron will help the stretching process, remember to cover the felt with a pressing cloth. Stretch and secure felt brim using pins and elastic. Press with a shot of steam and stretch the 4 corners until the felt moulds the shape of the bonnet block, leave to dry. When dry remove the elastic and pins, this may distort the shape a little, replace the hat on the block and re-iron any bumps out, remove and cut away excess felt.

~Fold back felt along grooved bonnet brim line, trim away felt leaving a small turning of 5 mm. Shape 24 gauge wire along this groove and bind both ends together with masking tape. Slip wire under felt brim turning and glue seam of felt down encasing wire. Ribbon ties and flowers will dress bonnet, alternatively bonnet may be covered with fabric and lined, then trimmed.



Cat & Co

31 Hurt Pd Unanderra 2526 N.S.W

Ph/ 02 4271330

artist@catnco.com www.catnco.com