

# Blossom

by Catherine Mather

## Eyebrows

Russet, Shadow brow, is light and blended softly, Brow Strokes, (1/2) Russet & (1/2) Chestnut. Brow strokes are irregular at the top and bottom, and a combination of thick and thin strokes, ending in a fine tip. Strokes start above the eye dot and extend only the width of the eye opening.

## Eyelashes

Mix Black (1/4) & Chestnut (3/4), for lower lashes. A combination of fine and thick strokes in a random style, starting short at the centre eye and lengthening at outside edge of eye, strokes start 1mm from eyerim and are thicker at the base and tapered at the tip. Eyerim, same colour as eyelash top and bottom.

## Eye Shading

Salmon (3/4) & Chestnut Brown (1/4) & zinc oxide for matt. shading (1/4). Deeper at eye fold and blended to a soft outer edge just short of eyebrow position.

## Lips

Rose Red gloss, soft colour on outer edge of lips, graduating into a heavier colour at centre of mouth, colours, (1/4) Pompa & (3/4) Rose Red gloss. Add fine detail lines to lip creavices.

## Nose & Eye Dots

Rose Red, for nose dots, dark centre fading to a light pink, at the edge of the nose opening. Eye dots, medium shading.

## Blush

Cheek blush, soft, graduating to a denser colour at lower cheek. Blush at temples, chin and nose bridge, soft.

## Limbs

Bisque-tone 1, all limbs are overall blushed, finger and toenail detail, remove blush from finger and toenails, a fine nail line of white gloss paint is applied at each nail tip. A glaze may be added over the whole of the nail and the pieces refired. Alternatively a non-fire glaze may be used over the nail.

## Skin-tone

Bisque-tone 1, overall, two shades deeper than the bisque.

Coat & Co  
31 Hurt Pde. Unanderra.  
(042) 71-3302

# Jossum

by Catherine Mather

## Skin-tone

Bisque-tone 1, overall, two shades deeper than the bisque.

## Eyebrows

Russet, Shadow brow, is light and blended softly, Brow Strokes, (1/2) Russet & (1/2) Chestnut. Brow strokes are irregular at top and bottom, and a combination of thick and thin strokes, ending in a fine tip. Strokes start above the eye dot and extend only the width of the eye opening.

## Eyelashes

False eyelashes are added when the doll is completed.

## Eye Shading

Salmon (3/4) & Chestnut Brown (1/4) & zinc oxide for matt. shading (1/4). Shade is deeper at the inside eyelid and outside eyelid, softer on the centre of the eyelid. Eyeline. Chestnut Brown, starting thicker at the inside eye and tapering to the outer edge of the eye.

## Lips

Rose Red gloss, soft colour on outer edge of lips, graduating into a heavier colour at centre of mouth, colour, (1/4) Pompa & (3/4) Rose Red gloss. Add fine detail lines to lip creavices.

## Nose & Eye Dots

Rose Red, for nose dots, dark centre fading to a light pink, at the edge of nose opening. Eye dots medium shading.

## Blush

Cheek blush, soft graduating to a denser colour at lower cheek. Blush at temples, chin and nose bridge, soft.

## Limbs

Bisque tone 1, all limbs are overall blushed, finger and toenail detail, remove blush from finger and toenails, a fine nail line of white gloss paint is applied at each nail tip. A glaze may be added over the whole nail and the pieces refired. Alternatively a non-fire glaze may be used over the nail.

Coat & Co  
31 Hunt Pde, Unanderra.  
(042) 71-3302

# Blossom & Possum Greenware & Firing

by Catherine Mather

HEAD Eye bevel size --- 18mm  
Eye size --- 16mm

Head circumference, fired - 28cm  
Finished baby doll length - 51cm

## Firing Instructions

HEAD Support crown on a circle of kiln cushion.

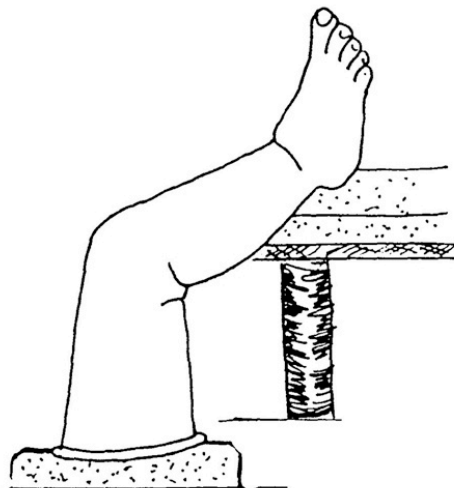
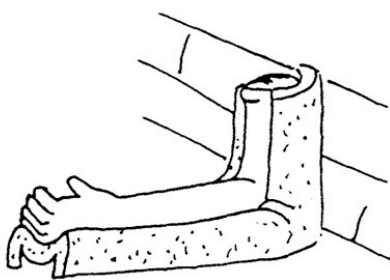
Arms Lay arms on Kiln cushion.

Legs Fire standing on thigh opening, place heel on edge of the kiln shelf, with sufficient kiln cushion under the heel to compact down as leg reduces size.

HEAD Support crown on a circle of kiln cushion.

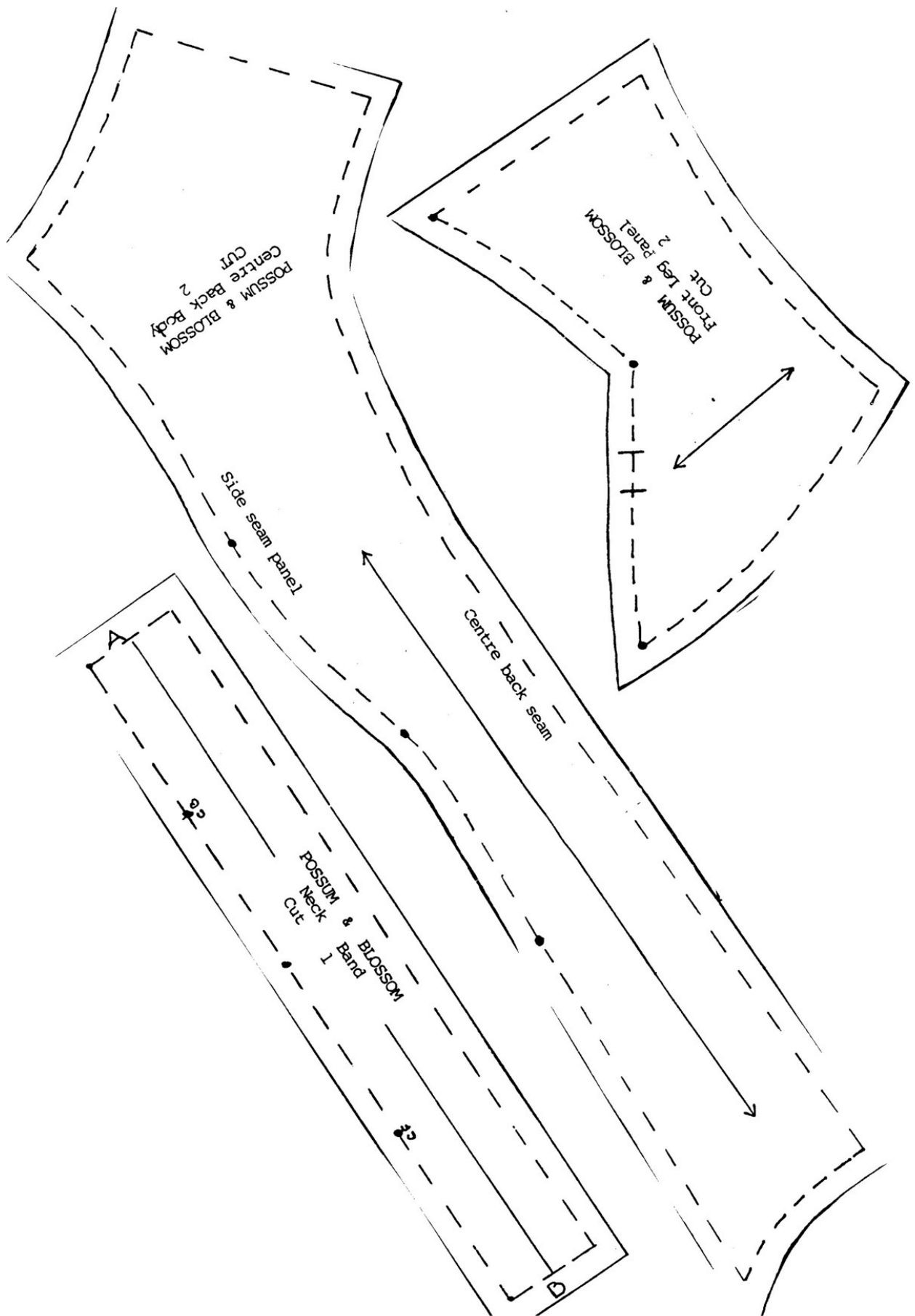
ARMS Lay arms on kiln cushion.

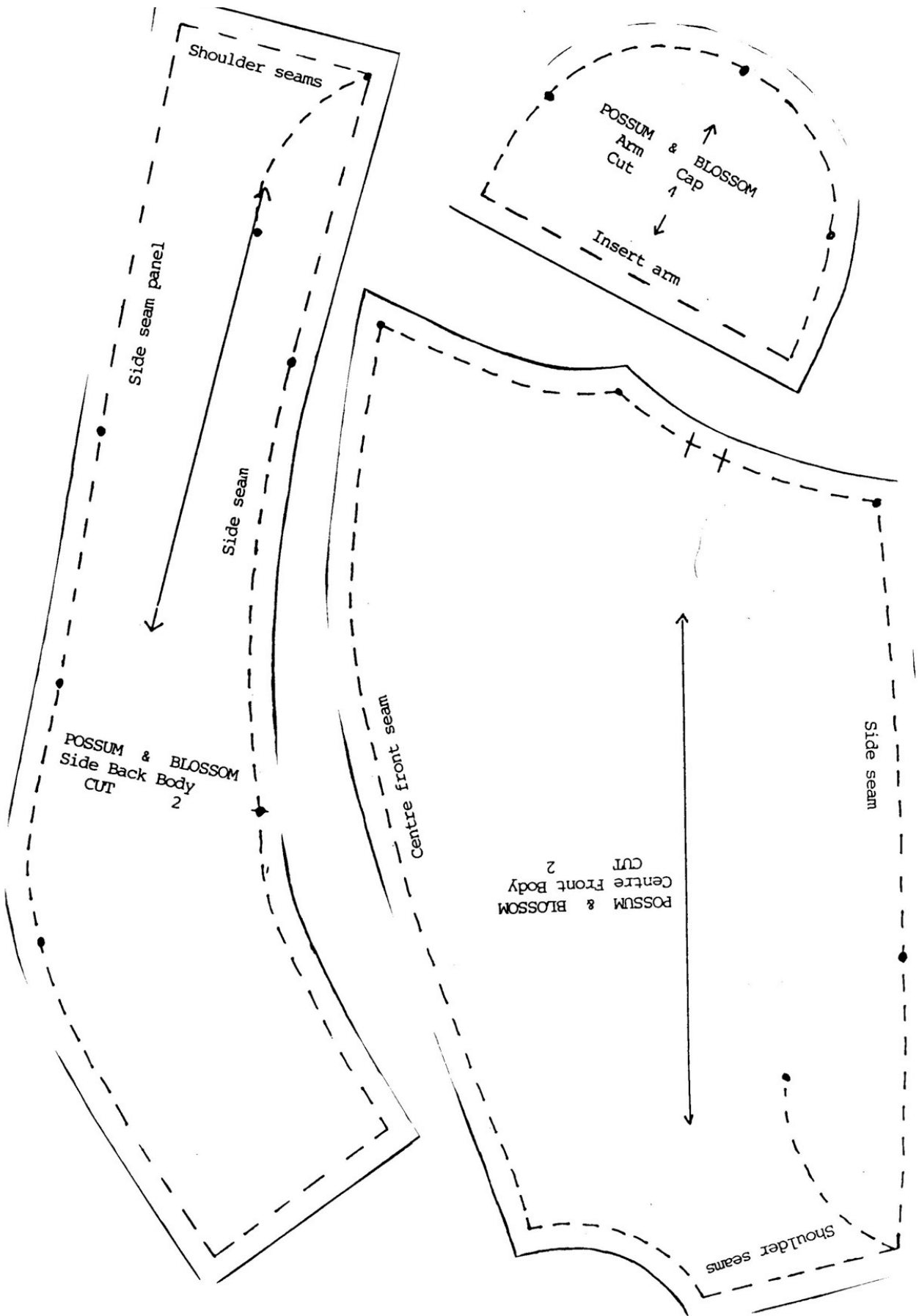
LEGS Fire standing on thigh opening, place heel on edge of the kiln shelf, with sufficient kiln cushion under the heel to compact down as leg reduces size.



Coat & Co

31 Hunt Pde. Unanderra.  
(042) 71-3302





## BODY PATTERN

BODY    Cut 1 Calico set  
         Cut 1 Nylon sheet wading set  
         Cut 1 flesh jersy set (Soft & Pretty)

The body has padded panels, and is weighted with pellets to give a natural feeling of weight to the baby. An over skin of flesh colour jersy may also be placed over the calico body, if the body is made of jersy only it will bag with the weight of the beads.

### BODY CONSTRUCTION

Over lock all wadding (or zig zag) all wadding body pieces to all calico body pieces before assembling. Remember to stitch on wrong sides of calico body pieces. The neck band is not padded.

Stitch centre front seam, from top neck to dot at lower edge.

Stitch leg panels to lower front body, matching 1 1 and dots.

Stitch ~~centre~~ back panels together.

Stitch side seam panels, matching dots to centre back panels.

Stitch back and front side seams together, matching dots.

Stitch shoulder seams.

Fold and press seams A & B on neck band, ( to allow cord insertoin ) fold and press band in 1/2 and attach neck panel to neck opening starting, at centre back.

### TOPS OF ARMS.

Stitch shoulder panels together along curved seam, attatch arm, to opening.